

English Learner Special Education Collaborative



The LACOE Multilingual Academic Support (MAS) Unit is proud to work with our partners at ICOE with the Improving Outcomes for English Learner with Disabilities Project to support participants understanding of federal policy that protects English Learners in Special Education settings and research underpinnings found in the California Practitioner's Guide for Educating English Learners with Disabilities. Participants will also discuss and review alignment to the English Learner Roadmap. This 3 session collaborative seeks to leverage the collective knowledge of our LA County LEAs. Each session will be held online from 8am-12pm.

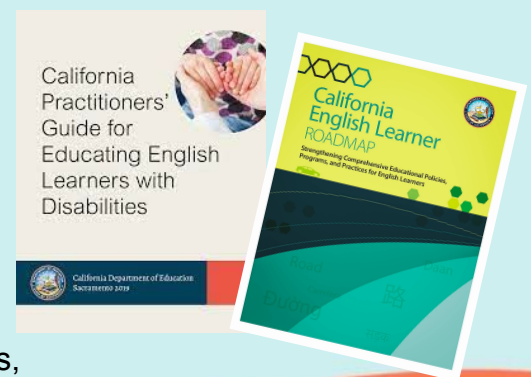
- **Session #1 September 21, 2021:** Identification of ELs, MTSS & Prereferral
Registration link: <http://icoe.k12oms.org/1168-208129>
Registration Access Code: LACOE
- **Session #2 December 9, 2021:** Assessment & IEP Process
Registration link: <http://icoe.k12oms.org/1168-208132>
Registration Access Code: LACOE
- **Session #3 March 9, 2022:** Join the MAS Unit for a Community of Practice to reflect on how you have applied the Practitioner's Guide and EL Roadmap to your work. We will hear from LEAs to hear what worked and what needs that emerged from the work.
Registration link: <http://laoe.k12oms.org/1539-204360>

Registration is required for each session.

Target Audience:

Multi-disciplinary teams:*, Special Education Teachers, EL Coordinators, School Psychologists Speech Language Pathologists, COE, District Level and Site-Based Administrators, SELPA Administrators & Staff

*Teams are encouraged to participate in the complete series, but may select to participate in individual sessions.



In partnership with



Los Angeles County
Office of Education

Multilingual Academic Support

Please direct questions to
MASUnit@laoe.edu or (562) 922-6332